



The Official Uniform Store Since 1952

Donald's St. Paul - 972 Payne Avenue - St. Paul, MN 55130 - Phone: 651-776-2723 or 1-800-728-8082 Ext. 0  
 Donald's WEST - 6407 City West Pkwy - Eden Prairie, MN 55344 - Phone: 651-776-2723 Ext. 1



**Shop Online @ [www.donaldsuniform.com](http://www.donaldsuniform.com)**

**Yinghua Academy  
2020 Uniform Price List**

**Girls' Pants & Shorts**

Girls' Twill Pants	Reg 3-6X	Reg/Slim 7-16	Juniors 3-15	Half Sizes
<b>Pleated Front Styles</b>				
A+ 7221 - <b>Adjustable Waist</b>	\$22.99	\$24.99	-	\$29.99
<b>Black</b>				
<b>Flat Front Styles</b>				
#4124/4024 Straight Leg <b>Adj. Waist</b>	\$23.99	\$26.99	-	\$31.99
#4025/4047 Mid-Rise Flare <b>Adj. Waist</b>	\$23.99	\$26.99	\$29.99	\$31.99
#2526 Slender Fit, Skinny Leg <i>with Stretch</i>	\$23.99	\$26.99	\$33.99	\$31.99

Girls' Twill Shorts	Reg 4-6X	Reg/Slim 7-16	Juniors 3-15	Half Sizes
<b>Black</b>				
#4046 Mid-Rise Flat Front <b>Adj. Waist</b>	\$21.99	\$24.99	\$27.99	\$28.99
Bermuda Style-Stretch <b>Adj. Waist</b>	\$17.99	\$19.99	\$23.99	\$22.99

**Jumpers, Skorts & Skirts**

Jumpers - Poly/Cotton	Regular	Half		
<b>#94 Drop Waist, Box Pleats</b>				
#94 Solid Color: Black (K-8)	\$38.90	\$40.90		
#94 Plaid: 59 (K-4)	\$40.90	\$42.90		
<b>Skorts - Black or Plaid 59</b>				
	3-6x	7 to 16	7H-16H	Jr 3-21
#2650 K-12 Pleated Tab Skort - Black	\$19.95	\$21.95	\$24.95	\$24.95
#2653 K-12 Pleated Scooter Skort -Black	\$20.95	\$22.95	\$25.95	\$25.95
#UD Skort - Plaid: 59 (K-4)	\$39.90	\$39.90	\$42.90	
<b>Drop Waist - Mid-Rise Skirts</b>				
	Regular	JR 3-31		
#449 Knife Pleats - Poly/Wool - Black (K-8)	\$48.90	\$49.90		

Traditional Fit Skirts	Regular	Half & Teen	T1/2
#34 Box Pleats - Black (K-8)	\$34.90	\$36.90	\$40.90
#34 Plaid: 59 (K-4)	\$38.90	\$41.90	\$51.90

**Girls' Accessories**

Girls' Socks	S-M-L
Trimfit Cotton/Spandex Knee High Socks	3/\$12.99
A+ Knee High Socks - Cable, Opaque, & Cotton	3/\$12.99
Triple Roll and Crew	3/\$12.99
Plaid #59 Ruffle Anklet	\$9.99 each or 3/\$24.99

**Tights**

Microfiber	\$6.00
Cotton	\$8.50

**Girls' Hair Accessories**

Hair Bows & Headbands	\$8.99 each
Scrunchie & Streamers Ponytail Holders	\$6.99 each

*15% Off each item when you buy 3 or more!*

**Belts**

Adjustable Stretch Belt - Heart or Plain Buckle	\$8.95
Adjustable Plaid Belt - Heart Buckle	\$9.95

**Girls' Knit Leggings & Bike Shorts**

	Youth XXS-XL	Junior S-XL
Leggings	\$16.99	\$19.99
Bike Shorts	\$10.99	\$14.99

**Boys' Pants & Shorts**

Boys' Twill Pants	Reg/Slim Size 3-7	Reg/Slim Size 8-16	Husky 25-38	Prep 27-30	Men's 30-48
<b>Black</b>					
<b>Pleated Front Styles</b>					
A+ #7027 <b>Adjustable Waist</b>	\$21.99	\$24.99	\$28.99	-	-
A+ #7022 <b>Flat Back</b>	-	-	-	\$29.99	\$29.99
#1268 <b>Elastic Back</b>	\$22.99	\$25.99	\$29.99	-	-
<b>Flat Front Styles</b>					
A+ #7750 Relaxed Fit, <b>Adj. Waist</b>	\$21.99	\$24.99	\$28.99	-	-
A+ #7021 Relaxed Fit, Flat Back	-	-	-	\$29.99	\$29.99
*New* Men's Flat Front <b>Slim</b> Chino Pants with Stretch #2555 Men's 28-42 \$34.99					
*New* A+ #7893/7894 Modern Fit \$23.99 \$26.99 \$29.99 - \$34.99					
All-Around Elastic Waist Pants	\$21.99				

*\*3-16 and Husky sizes have Double Knees\**

Boys' Twill Shorts	Reg/Slim Size 3-7	Reg/Slim Size 8-16	Husky 25-38	Prep 27-30	Men's 30-38
<b>Black</b>					
<b>Pleated Front Styles</b>					
A+ #7309 <b>Adj. Waist</b> /#7320 Flat Back	\$20.99	\$23.99	\$26.99	\$26.99	\$27.99
#1286 Elastic Back	\$19.99	\$21.99	\$24.99	-	-
<b>Flat Front Styles</b>					
A+7099 <b>Adj. Waist</b> /#7031 Flat Back	\$20.99	\$23.99	\$26.99	\$28.99	\$28.99
#2472 Men's Microfiber Shorts - 9" Inseam	Men's 28-42 \$37.99				
*New* Microfiber Shorts #1328	\$23.99	\$26.99	\$29.99	\$31.99	\$33.99
All-Around Elastic Waist Shorts	\$19.99				

**Boys' Accessories**

Belts	20-42"	44-48"
1 1/4" Leather Dress Belt	\$15.95	\$19.95
<b>One Size</b>		
Adjustable Stretch Belt - Magnet Closure or Heart Buckle	\$8.95	
<b>Boys' Socks</b>		
<b>S-M-L</b>		
A+ Crew Socks	3/\$12.99	
Trimfit Crew Socks	3/\$9.99	



**UNIFORMS IN STOCK YEAR ROUND**  
 Visit Our Retail Store or Shop Online 24/7!

[www.donaldsuniform.com](http://www.donaldsuniform.com)



**Donald's**

The Official Uniform Store Since 1952



Donald's St. Paul - 972 Payne Avenue - St. Paul, MN 55130 - Phone: 651-776-2723 or 1-800-728-8082 Ext. 0  
 Donald's WEST - Shady Oak Center - 6407 City West Pkwy - Eden Prairie, MN 55344 - Phone: 651-776-2723 Ext. 1

Shop Online @ [www.donaldsuniform.com](http://www.donaldsuniform.com)

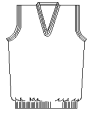
**英華 | YINGHUA ACADEMY**

**Yinghua Academy  
2020 Uniform Price List**

**Sweaters**

**V-Neck Sweater Vest**

K-4 - Black with Logo - 5-8 - Black or Red with Logo



Youth	Adult S-XL	2XL-3XL
\$31.00	\$35.00	\$40.00

*Embroidered Logo*

**V-Neck Cardigan with Pockets**

K-4 - Black with Logo - 5-8 - Black or Red with Logo



Youth	Adult S-XL	2XL-3XL
\$38.00	\$44.00	\$48.00

*Embroidered Logo*

**V-Neck Pullover Sweater**

K-4 - Black with Logo - 5-8 - Black or Red with Logo



Youth	Adult S-XL	2XL-3XL
\$33.00	\$38.00	\$46.00

*Embroidered Logo*

**Girls' Crew Neck Cardigan Sweater**

K-4 - Black with Logo - 5-8 - Black or Red with Logo



Youth	Adult S-XL	2XL-3XL
\$34.00	\$39.00	\$46.00

*Embroidered Logo*

**Fleece Jackets and Vests**

**1/2 Zip Fleece Jacket - Style #1000**

K-4 - Black with Logo

*Embroidered Logo*

5-8 Black or Red w/ Logo



Youth	Adult S-XL	2XL-3XL
\$34.00	\$38.00	\$42.00

**Full Zip Fleece Jacket - Style #1001**

K-4 - Black with Logo

*Embroidered Logo*

5-8 Black or Red w/ Logo



Youth	Adult S-XL	2XL-3XL
\$35.00	\$41.00	\$45.00

**Girl Fit Full-Zip Fleece Jacket - Style #1010**

K-8 Black with Logo

*Embroidered Logo*



Youth	Adult S-XL	2XL-3XL
\$36.00	\$42.00	\$44.00

**Sweatshirts**

**Crew Neck Sweatshirt - Russell Athletic**

K-4 - Black with Logo

*Embroidered Logo*

5-8 Black or Red w/ Logo



Youth	Adult S-XL	2XL-3XL
\$23.00	\$27.00	\$29.00

**Jumpers**

**Jumpers - Poly/Cotton**

Regular Half

Black with Logo

*Embroidered Logo*

#94 Solid Color: Black (K-8)

\$44.00	\$46.00
---------	---------

**Knit Polo Shirts**

**Unisex Smooth Interlock or Mesh Knit Polo Shirts**

K-4 - Light Blue with Logo

*Embroidered Logo*

5-8 - Red or Light Blue with Logo

Short Sleeve Long Sleeve



Youth XXS-XL	\$22.00	\$25.00
Adult XS-XL	\$26.00	\$29.00
Adult 2XL-3XL	\$29.00	\$32.00

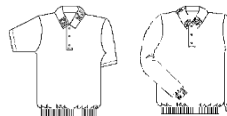
**Unisex Banded Bottom Knit Polo Shirts**

K-4 - Light Blue with Logo

*Embroidered Logo*

5-8 - Red or Light Blue with Logo

Short Sleeve Long Sleeve



Youth XXS-XL	\$26.00	\$29.00
Adult XS-XL	\$31.00	\$34.00
Adult 2XL-3XL	\$34.00	\$36.00

**Performance Knit Polo Shirts**

Moisture Wicking

K-4 - Light Blue with Logo

*Embroidered Logo*

5-8 - Red or Light Blue with Logo

Short Sleeve

Youth XXS-XL	\$25.00
Adult XS-XL	\$29.00
Adult 2XL-3XL	\$31.00



**Girl Fit Mesh Knit Polo Shirts**

K-4 - Light Blue with Logo - 5-8 - Red or Light Blue with Logo

Short Sleeve *Embroidered Logo*



Youth XS-XL	\$23.00
Junior S-XL	\$27.00
Junior 2XL	\$30.00

**Turtlenecks**

K-4 - Light Blue with Logo - 5-8 - Red or Light Blue with Logo

*Embroidered Logo*



Youth XXS-XL	\$24.00
Adult XS-XL	\$28.00
Adult 2XL-3XL	\$31.00

**Oxford Dress Shirts & Blouses**

**Boys' Oxford Cloth Dress Shirts**

K-8 - Light Blue with Logo

*Embroidered Logo*

Short Sleeve Long Sleeve



Youth Sizes	\$23.00	\$25.00
Adult Sizes S-XL	\$28.00	\$30.00
XXL-XXXL	\$29.00	\$31.00

**Girls' Oxford Cloth Blouses**

K-8 - Light Blue with Logo

*Embroidered Logo*

Short Sleeve Long Sleeve



Youth Sizes	\$23.00	\$25.00
Women's XS-3XL	\$27.00	\$29.00

**Girls' Peter Pan Blouses**

K-8 - Light Blue with Logo

*Embroidered Logo*

Short Sleeve Long Sleeve



Youth Sizes	\$21.00	\$23.00
Women's XS-3XL	\$23.00	\$25.00

Phone Orders Welcome



**Donald's**

The Official Uniform Store Since 1952

Donald's St. Paul - 972 Payne Avenue - St. Paul, MN 55130 - Phone: 651-776-2723 or 1-800-728-8082 Ext. 0  
 Donald's WEST - Shady Oak Center - 6407 City West Pkwy - Eden Prairie, MN 55344 - Phone: 651-776-2723 Ext. 1



**Shop Online @ [www.donaldsuniform.com](http://www.donaldsuniform.com)**

**英華 | YINGHUA ACADEMY**

**Yinghua Academy  
2020 Uniform Price List**

**Sweatshirts**

**Crew Neck Sweatshirt - Russell Athletic**

**5-8 Red**

No Heat Transfer on Black



	<u>Youth</u>	<u>Adult S-XL</u>	<u>2XL-3XL</u>
	\$15.90	\$19.90	\$21.90

[Free Heat Transfer Logo Available](#)

**Oxford Dress Shirts & Blouses**

**Boys' Oxford Cloth Dress Shirts**

**K-8 - Light Blue**



	<u>Short Sleeve</u>	<u>Long Sleeve</u>
Youth Sizes	\$17.90	\$19.90
Adult Sizes S-XL	\$22.90	\$24.90
XXL-XXXL	\$23.90	\$25.90

[Free Heat Transfer Logo Available](#)

**Girls' Oxford Cloth Blouses**

**K-8 - Light Blue**



	<u>Short Sleeve</u>	<u>Long Sleeve</u>
Youth Sizes	\$17.90	\$19.90
Women's XS-3XL	\$21.90	\$23.90

[Free Heat Transfer Logo Available](#)

**Girls' Peter Pan Blouses**

**K-8 - Light Blue**



	<u>Short Sleeve</u>	<u>Long Sleeve</u>
Youth Sizes	\$14.90	\$16.90
Women's XS-3XL	\$16.90	\$18.90

[Free Heat Transfer Logo Available](#)

**Knit Polo Shirts**

**Unisex Smooth Interlock or Mesh Knit Polo Shirts**

**K-4 - Light Blue**

**5-8 - Red or Light Blue**



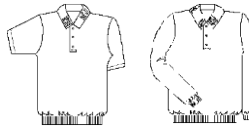
	<u>Short Sleeve</u>	<u>Long Sleeve</u>
Youth XXS-XL	\$16.90	\$19.90
Adult XS-XL	\$20.90	\$23.90
Adult 2XL-3XL	\$23.90	\$26.90

[Free Heat Transfer Logo Available](#)

**Unisex Banded Bottom Knit Polo Shirts**

**K-4 - Light Blue**

**5-8 - Red or Light Blue**



	<u>Short Sleeve</u>	<u>Long Sleeve</u>
Youth XXS-XL	\$20.90	\$23.90
Adult XS-XL	\$25.90	\$28.90
Adult 2XL-3XL	\$28.90	\$30.90

[Free Heat Transfer Logo Available](#)

**Girl Fit Mesh Knit Polo Shirts**

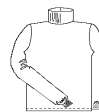
**K-4 - Light Blue - 5-8 - Red or Light Blue**



	<u>Short Sleeve</u>	<u>Free Heat Transfer Logo Available</u>
Youth XS-XL	\$16.90	<a href="#">Transfer</a>
Junior S-XL	\$20.90	<a href="#">Logo</a>
Junior 2XL	\$22.90	<a href="#">Available</a>

**Turtlenecks**

**K-4 - Light Blue - 5-8 - Red or Light Blue**



	<u>Free Heat Transfer Logo Available</u>	
Youth XXS-XL	\$17.90	
Adult XS-XL	\$21.90	
Adult 2XL-3XL	\$24.90	

UNIFORMS IN STOCK YEAR ROUND  
 Visit Our Retail Store or Shop Online 24/7!  
[www.donaldsuniform.com](http://www.donaldsuniform.com)

**Order Online and Pick Up Your Order at the Donald's Location of Your Choice!**

**No Shipping Charge!**

Select the "Call When Ready - In-Store Pickup" Option at Checkout. Available for Both Locations!

[www.donaldsuniform.com](http://www.donaldsuniform.com)