

Dear Parent / Guardian,

We have a wonderful opportunity to offer to our families. **Lexia Reading** is an exciting, fun software program that provides the individualized, targeted practice students need to master their reading skills! Our school has implemented **Lexia Reading** as part of our curriculum in reading and language arts. This program will support the students' learning of English at home. This is truly an exciting opportunity for all of our students.

Here's how this award-winning, computer-based reading program works:

- Students will be placed into **Lexia Reading** based on their individual reading needs.
- Students may spend time several days per week working on a **Lexia Reading** program outside of school.
- **Lexia Reading** automatically paces each student by providing reinforcement activities when they need additional time on a task. Students practice, apply and proceed with the skills they have mastered.
- **Lexia Reading** focuses on critical reading skills that have been identified by national reading experts.
- Various levels of activities provide extensive practice in everything from basic phonological awareness to advanced word-attack strategies and vocabulary development based on Greek and Latin root words.
- Students systematically progress through the software and gain a sense of achievement, confidence and independence. Student's successes are recorded and teachers and parents can see growth through a web based record system. Even though students are working at home, teachers can still monitor the progress being made.

Lexia Reading has helped thousands of students across the United States to develop fundamental reading skills, in a fun and dynamic way. Our school has decided to make this a part of your child's reading curriculum – please share in our commitment by using this valuable tool at home!

Join us in your child's reading growth and success!

Best,

Phillip Morris
Assessment / Media Center Coordinator
phillip.morris@yinghuaacademy.org

Lexia Login Information

Once the program is installed on your computer your child will require a username and a password.

Username : child's full first name plus the first letter of their last name.

password: english

For example, a student with the name of Jennifer Smith would use the following information to login:

username: jennifers

password: english

(On rare occasions a student may need to add the second letter of their last name to the username.)

Please contact me if you have any difficulties installing or accessing the Lexia Reading program.

Phillip Morris
Assessment/Media Center Coordinator
phillip.morris@yinghuaacademy.org

School-To-Home Connection

These installation instructions are for parents and guardians who have been notified by their school that *Lexia Reading*® can be used at home. (International users will see *Lexia Reading UK*). For more information (including technical troubleshooting), see <http://lexialearning.com/support/parents.html>. For assistance with the installation and usage of Lexia Reading, please contact your child's school.

1. Can your computer run *Lexia Reading*?

Macintosh

- Mac OS X 10.4 or higher

Windows

- Windows XP (SP3), Vista, Windows 7 (Professional and Ultimate)

Additional System Requirements

- At least 256 MB RAM
- At least 500 MB hard drive space
- Speakers or headset (headset recommended)
- 32 MB accelerated video graphics card or better

Do you filter content on your home computer?

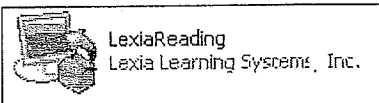
Please configure all content-filtering software, firewalls, and browsers on your home systems to allow access to *student.myllexia.com* and *update.lexialearning.com* via SSL (port 443).

2. Download *Lexia Reading* Installer

<http://www.lexialearning.com/support/lexiareading/license.html>

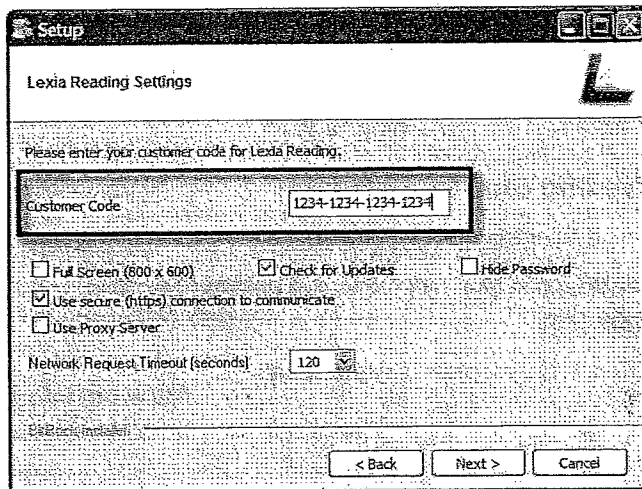
3. Install & Configure *Lexia Reading*

- Windows:** Double-click the *Lexia Reading.exe* installer file that you downloaded.



You may receive a warning message from Windows, saying the publisher of the software is unknown. This is normal, and it is safe to click OK to continue with the install.

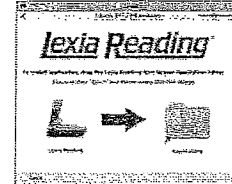
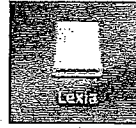
Follow the screen prompts until you see the **Customer Code** screen (*below*): Proceed to Step C.



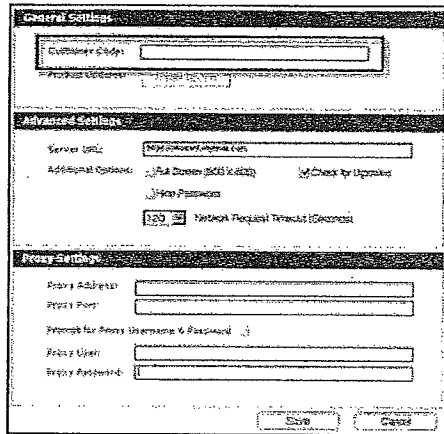
Note: The Customer Code in this graphic is for example only. See the next page for your school's Customer Code.

For more information, see <http://lexialearning.com/support/parents.html>
For assistance, please contact your child's school

- b) **Macintosh:** Double-click the Lexia volume (or Lexia UK) that you downloaded. Drag and drop the Lexia icon from the left to the Applications folder on the right to install.



In the Applications folder, click the Lexia icon. The Settings screen displays.



- c) **Windows and Macintosh:** Type in the customer code you received from the school (include dashes). **Warning:** Do not copy and paste the customer code during the installation process! This may cause the installation to fail.

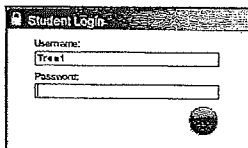
Customer Code:	9239 - 4469 - 3437 - 7820
----------------	---------------------------

No other changes are recommended. Do not configure any proxy settings.

- d) **Windows:** Follow the screen prompts to complete the installation.
Macintosh: Click **Save** to close the Settings screen.

4. Using the Lexia Reading Student Software

- a) Double-click the *Lexia Reading* icon on your desktop to launch the software.
b) Your child will need to type in their username and password to start.



Username:	Username information is attached to the letter.
Password:	Password information is attached to the letter.

Note: Lexia Reading is intended for independent practice by the student with no assistance from parents or siblings. Please allow your child to work at their own pace without assistance.

Getting a 1029 error? Please see <http://lexialearning.com/products/mylexia/faqs/mcafee.html> for instructions on fixing this issue.

Lexia Reading®

Lexia Reading on the iPad: Get Started

Lexia Reading on the iPad is for students using Lexia Early Reading®, Lexia Primary Reading®, and Lexia Strategies for Older Students®.

A valid myLexia.com teacher account is required to setup the iPad app (see Step 2).

STEP 1: DOWNLOAD

Download the Lexia Reading iPad app to your device:

- Use this URL:
<https://itunes.apple.com/app/lexia-reading/id555676901?mt=8>
- Or, in the iTunes or App Store, search for Lexia. You will see the Lexia Reading app (see Figure 1).

STEP 2: ONE-TIME SETUP

After downloading, open the Lexia Reading app and complete this one-time setup before student use.

1. To start setup, tap the Lexia Reading icon to open the app.
2. On the Welcome screen, select School or Home (see Figure 2):
 - Setup on a school device by an educator requires a **teacher email** and **valid myLexia password**. The password ensures students cannot reset the setup.
 - Setup on a home device by a parent requires a **teacher email address** (for a valid myLexia.com account) only.

STEP 3: ALLOW STUDENT LOGIN

Students login with a valid username and password (see Figure 3).

Students who are new to Lexia Reading will be given Auto Placement.

Students will time out from the app after 15 minutes of inactivity.

Resetting Setup

Resetting the Setup will “undo” Step 2 and allow students from different customer accounts to login. Most customers will never need to do this.

To reset the setup, click the [Wrong School? Click here to change link](#) (see Figure 3). Changing the setup on a school device requires a teacher email and valid myLexia password.

System Requirements

- iPad 2+, iPad Mini
- iOS v5 and higher
- 325 MB storage (650 MB needed to download)
- Internet connection (minimal bandwidth is used)
- Headset (recommended)



Figure 1 Lexia Reading iPad App

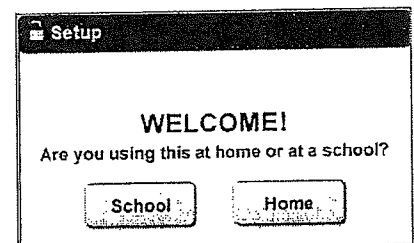
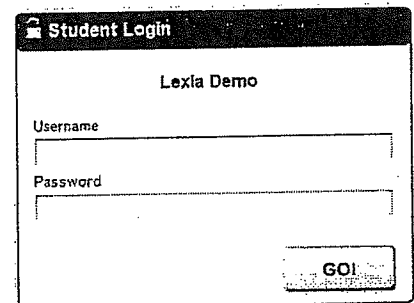


Figure 2 Setup Screen



I'm a teacher looking for myLexia
Wrong School? Click here to change.

Figure 3 Student Login

